



# Pentra-Sil®

**(NL)** Concrete Chemical Hardener,  
Sealer and Densifier

Convergent Concrete  
Technologies, LLC.

Specialty Chemical Concrete  
Treatments Commercial  
Products Group

115 North 1380 West  
Orem, Utah 84057  
United States of America  
Office: 801-375-2280  
Fax: 801-375-2971  
[www.convergentconcrete.com](http://www.convergentconcrete.com)



(Patented) Nano Lithium™ (NL)  
Concrete Floor Treatments

©2010 Convergent Concrete  
Technologies LLC. All Rights Reserved.

## PRODUCT DESCRIPTION

**Pentra-Sil® (NL) Concrete Chemical Hardener, Sealer and Densifier** is a patented **Nano Lithium™** surface treatment that both penetrates and seals by reacting chemically to the concrete surface forming a clear, dense, durable and hard inorganic topical surface layer that is breathable, abrasion-resistant, and extremely hard. It is excellent for concrete floors needing long-term protection against heavy wear and abuse, moisture, dirt and grime buildup, as well as protection against alkalinity and efflorescence (salt residue.) **Pentra-Sil® (NL)** is a colorless, odorless water-based solution that is V.O.C. compliant and environmentally safe to use.

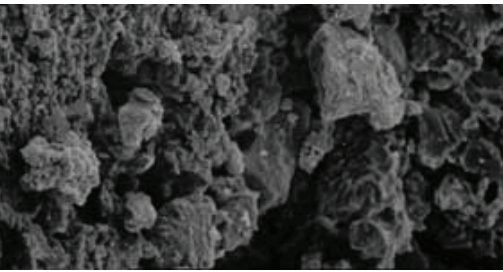
## KEY BENEFITS

- Penetrates deep inside the concrete capillaries chemically reacting with the free lime forming a permanent insoluble bond with the concrete.
- Forms a protective surface layer that is breathable, dense and abrasion resistant.
- Creates a stronger, more impenetrable, and better-looking finish (satin – glossy) that is dust-proof, resistant to staining and deterioration.
- Reduces maintenance, cleaning costs and costly repairs.

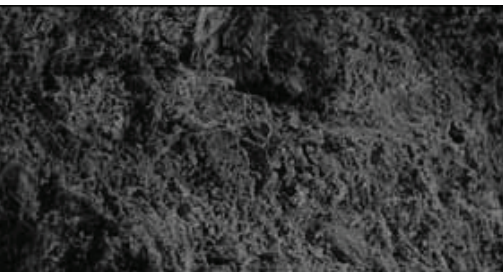
## UNIQUE CHEMISTRY

**Pentra-Sil® (NL)**'s unique reactive chemistry forms an insoluble bond with the free lime forming an extremely strong Tri-calcium silicate compounds that bind together micro particles (lime and fine aggregate) forming a non-expansive gel that rapidly cures into inorganic cement that is stronger, more durable than the cement itself. **Pentra-Sil® (NL)**'s unique atomic structure (Particle Size) and lower viscosity compared to conventional treatments provides superior penetration within the capillary channels providing a more consistent and uniform cure. The patented Advanced **Nano Lithium™ (NL)** technology will not absorb water or affect alkalinity and is suitable for both interior and exterior applications on new or existing concrete.

**Table 1.**



Magnification 200X  
Untreated



Magnification 200X  
Treated

Treated surfaces maintain the sheen even against pedestrian and traffic wear and regular maintenance. Floors last longer and cost less to maintain and look better over time. In fact, the surface sheen increases with age and regular maintenance from a satin to a glossy clear finish.

See Table 1. (For visual descriptions of magnified views.)

**ADVANTAGES**

- Molecular size of Lithium provides for deeper penetration more permanent protection.
- Non-soluble / Non-expansive Lithium will not absorb water or cause the floor to sweat (SSF).
- Will not scratch or peel.
- Chemically reacts with concrete to produce insoluble calcium silicate hydrate making it harder and less permeable.
- Reduces dusting for cleaner and safer environments.
- Easy one coat application. No water wash required.
- Can be applied on fresh, newly trowelled concrete and tilt-up construction slabs.
- Curing compounds can be applied on top of treated surfaces to provide ultimate hydration without discoloring or whitening the surface.
- Does not contain sodium or potassium salts that may contribute to surface crazing, efflorescence, and surface ASR.
- Provides high reflectivity (surface sheen) that beautifies concrete and holds up to heavy traffic and improves aesthetically.
- Treated surfaces require no waxing and provide immediate sheen that improves over time with normal wear and maintenance.
- Water based, contains no solvents. Low VOC content, < 50g/L.
- Permanent and durable surface resists marks, improves traction, and helps prevent waterborne contaminants from staining.
- Makes concrete easier to clean, creating an environment that is less susceptible to the proliferation of harmful bacteria.
- Prevents efflorescence and the leaching of lime.
- USDA approved for incidental food contact.
- Extends the life expectancy, and integrity of the floor.
- Little or no downtime.

**PACKAGING**

5 Gal Plastic Pail	46.5 lbs	21.0 kgs
55 Gal Drum	512 lbs.	232 kgs
275 Gal tote (IBC)	2558 lbs.	1,160 kgs

**Primary Industrial Markets Served**

**Industrial & Manufacturing**

- Manufacturing plants
- Warehouse storage facilities
- Distribution centers
- Food processing plants
- Textile mills
- Wastewater treatment plants
- Pharmaceutical
- Electronic
- Cold Storage / Freezers
- Beverage processing
- Chemical processing
- Electronics

**Transportation**

- Parking garages
- Aircraft hangars
- Automotive dealerships
- Parking decks
- Transportation terminals
- Vehicle maintenance areas

**Commercial & Institutional**

- Business office buildings
- Cafeterias/restaurants
- Correctional institutions
- Retail & shopping centers
- Schools/education facilities
- Sports & entertainment venues
- Stadiums

**Health Care**

- Hospitals
- Animal holding facilities
- Health care facilities
- Veterinary clinics

**Common Areas**

- Aisleways/corridors
- Chemical areas
- Clean rooms
- Cold storage
- Kitchens
- Laboratories
- Loading docks
- Lobby areas
- Mechanical rooms
- Mezzanines
- Restrooms & shower areas

**USE & TECHNICAL SPECIFICATIONS**

**COVERAGE / TREATMENT YIELD\***

Steel Troweled	400-550 ft <sup>2</sup> per gallon (1 liter per 9.8 to 13.5m <sup>2</sup> )
Broom Finished	250-350 ft <sup>2</sup> per gallon (1 liter per 6 to 8.5m <sup>2</sup> )

\*Coverage rate will vary with each concrete quality

**DRYING TIME**

1-2 hours

**PHYSICAL PROPERTIES**

Form	Clear, pale light green, water-based solution
Total Solids	16%
Active Ingredients:	100% of total solids
Specific Gravity:	1.11
pH	11.0
Flash Point:	N/A
V.O.C. Content	50<gms/L
Freeze point	32°F(0°)
Slip Resistance	Does not change floor friction coefficient*
Depth of Surface Penetration	2-8mm
Shelf Life	1 year in factory sealed container

\*Must employ all recognized slip and fall prevention techniques

**COMPLIANCES**

Recommended for use on concrete classes both new and existing surfaces as noted in ACI Standard 302.1R-89

Safe for use in Food & Drug Processing Industries

**FRICTION TEST DATA**

**Pentra-Sil® (NL)** treatments exhibit properties and characteristic indicated in table 1 Friction

This series of tests were conducted according to ASTM C-1028-96 guidelines. All samples had a machine trowel finish. The Pentra-Guard sample was also polished with diamond discs up to 1000 grit.

**RESULTS**

Dry untreated specimen = 0.710	
Wet untreated specimen = 0.480	
Pentra-sil treated specimen	
Dry = 0.710	Wet = 0.470

**INTERPRETATION**

The dynamics of friction on concrete are very complex. This testing can only be interpreted to mean that Pentra-sil products do not significantly alter the friction qualities of the surface they are applied to. All standard methods for accident prevention must be used in situations where slip and fall or traction concerns exist.

Abrasion resistance (ASTM C 779\*)

Taper Abrader

ASTM E96 Standard Test Methods for Water Vapor Transmission of Materials

ACI Standard 302.1R-89

## LIMITATIONS

- **Pentra-Sil® (NL)** is not suitable for asphalt or non cementitious surfaces or painted surfaces
- **Pentra-Sil® (NL)** will not bridge or fill cracks and will not salvage honeycombed or structurally unsound surfaces.
- **Pentra-Sil® (NL)** is not recommended for plastic concrete or mortar or resin-based terrazzo mixes.
- Do not allow **Pentra-Sil® (NL)** to dry on terrazzo (resin-based) floors except as indicated in application instructions.
- Do not allow **Pentra-Sil® (NL)** to come in contact with any glass, fabric, metal, or painted surfaces. Immediately wipe contaminated surfaces with a clean water-saturated cloth, then wipe dry with a second clean cloth.
- For subsequent coatings applications, perform proper surface preparation and consult the coating manufacturer for more instructions.

## APPLICATION PROCEDURES & INSTRUCTIONS

Application by spray, roller, microfiber applicator, or broom to new or old concrete. (Always test each concrete surface for suitability and desired results. Let surface dry before inspection and approval of desired application.)

### NEW CONCRETE

**Pentra-Sil® (NL)** may be applied to newly installed concrete immediately after final trowelling operation is complete, or virtually anytime thereafter. In general, the concrete should be cleaned of anything that might impair penetration or appearance. If curing blankets are used, we recommend waiting until after they are removed and the surface is thoroughly cleaned before applying **Pentra-Sil® (NL)**.

### NEW CONSTRUCTION CONCRETE FLOORS ONLY

**TIMING:** Joint cutting is more important for the performance of the slab than treating the slab immediately with **Pentra-Sil® (NL)** (Time- of-Placement). **Pentra-Sil® (NL)** may be applied before or after the joints are cut.

### APPLICATION TREATMENT OF DENSIFIER

1. Consult with concrete placement Superintendent and Saw Cutting crew about the timing of the **Pentra-Sil® (NL)** application.
2. Determination: If applying **Pentra-Sil® (NL)** prior to joint cutting proceed to Application Instruction below. If applying **Pentra-Sil® (NL)** post cutting of joints, begin with Application Instruction (B.) below.

### APPLICATION INSTRUCTION STEPS

A. Application Instructions **Before** Joints are cut: Using a high volume, low pressure sprayer; apply **Pentra-Sil® (NL)** to the surface evenly at the rate of approximately 400-500 square ft. per gallon. (DO NOT OVER APPLY) Keep the surface wet with **Pentra-Sil® (NL)** for at least 20 minutes. DO NOT LET ANY AREA DRY OUT - spray more **Pentra-Sil® (NL)** if required. Lightly broom out any puddles right after the material has been sprayed so the surface is uniformly wet for a minimum of 20 minutes.

B. Application Instructions **After** Joints are cut: Clean up saw cut residue from the surface using vacuums, sweepers, blowers, or brooms. Use appropriate scrubber equipment with Red or Blue pad, (Blue pads are more aggressive and should only be used if you have determined they will not damage the surface) clean the joints to remove any residue that sweeping or blowing did not remove. Damp mop the

**CUSTOMER SERVICE:**

(1-866-375-2280) to verify the most current versions or visit our website: [www.convergentconcrete.com/product/productpentrasil.html](http://www.convergentconcrete.com/product/productpentrasil.html)

joints and around columns to get the surface thoroughly clean. Then using a high volume, low pressure sprayer (3 to 5 gallons per minute pumping capacity); apply **Pentra-Sil® (NL)** to the surface evenly at the rate of approximately 400 square ft. per gallon. (DO NOT OVER APPLY) Keep the surface wet with **Pentra-Sil® (NL)** for at least 20 minutes. DO NOT LET ANY AREA DRY OUT--spray more **Pentra-Sil® (NL)** if required. Lightly broom out any puddles right after the material has been sprayed so the surface is uniformly wet for a minimum of 20 minutes.

**Curing Blankets:** If curing blankets are going to be used, we recommend applying **Pentra-Sil® (NL)** after the blankets have been removed at the completion of curing and after the slab has been thoroughly cleaned. Placing curing blankets on top of a freshly treated surface almost always leaves marks that are nearly impossible to remove.

#### **APPLICATION OF Pentra-Sil® (NL) FOR NEW CONSTRUCTION INTEGRALLY COLORED CONCRETE FLOORS**

**TIMING:** Joint cutting is more important for the performance of the slab than treating the slab immediately with **Pentra-Sil® (NL)**. **Pentra-Sil® (NL)** may be applied before or after the joints are cut.

#### **APPLICATION TREATMENT OF DENSIFIER**

1. Consult with concrete placement Superintendent and Saw Cutting crew about the timing of the **Pentra-Sil® (NL)** application.

2. Determination: If applying **Pentra-Sil® (NL)** prior to joint cutting proceed to Application Instruction 1) below. If applying **Pentra-Sil® (NL)** post cutting of joints begin with Application Instruction 2.) below.

#### **A. APPLICATION INSTRUCTION STEPS**

1. Application Instructions Before Joints are cut:

a. Step 1. Using a high volume, low pressure sprayer; apply **Pentra-Sil® (NL)** to the surface evenly at the rate of approximately 500 square ft. per gallon. (DO NOT OVER APPLY) Keep the surface wet with **Pentra-Sil® (NL)** for at least 20 minutes. DO NOT LET ANY AREA DRY OUT--spray more **Pentra-Sil® (NL)** if required. Lightly broom out any puddles right after the material has been sprayed so the surface is uniformly wet for a minimum of 20 minutes. IMPORTANT--never let surface dry until steps 2 & 3 are completed

b. Step 2. After 20 minutes, spray water on the surface (saturating the entire surface—It is critical not to let any section of the surface dry prior to completing (step 3). This will allow a more consistent uniform finish c. Step 3. Clean and remove excess residue with either a scrubber or manually.

i. **SCRUBBER INSTRUCTIONS:** We strongly recommend that you use a scrubber, equipped with a Red or Blue pad (Blue pads are more aggressive and should only be used if you have determined they will not damage the surface) or brushes. With the squeegee down, the vacuum on, and light head pressure, add water, scrub, and clean the surface to remove all excess residue. Dispose of in accordance with local regulations.

ii. **MANUAL INSTRUCTIONS:** If no scrubber is available, while surface is wet with water, agitate with a broom to loosen any excess material that remains. Add more water if necessary. Squeegee the wastewater from the surface and dispose of in accordance with local regulations. Then repeat cleaning procedure with a second pass to insure all residue has been completely removed, i.e. salt deposits, saw-cut powder, dust, excess **Pentra-Sil® (NL)** or any other surface contaminates.

2. Application Instructions After Joints are cut: a. Step 1. Clean up saw cut residue from the surface using Vacuums, sweepers, blowers, or brooms. Use appropriate scrubber equipped with green or red pads, (Red pads are more aggressive and should only be used if you have determined they will not damage the surface) clean the joints to remove any residue that sweeping or blowing did not remove. Damp mop the joints and around columns to get the surface thoroughly clean. Then using a high volume, low pressure sprayer; apply **Pentra-Sil® (NL)** to the surface evenly at the rate of approximately 400 square ft. per gallon. (DO NOT OVER APPLY) Keep the surface wet with **Pentra-Sil® (NL)** for at least 20 minutes. DO NOT LET ANY AREA DRY OUT--spray more **Pentra-Sil® (NL)** if required. Lightly broom out any puddles right after the material has been sprayed so the surface is uniformly wet for a minimum of 20 minutes. IMPORTANT-never let surface dry until steps 2 & 3 are completed. b. Step 2. After 20 minutes, spray water on the surface (saturating the entire surface—It is critical not to let any section of the surface dry prior to completing (step 3). This will allow a more consistent uniform finish.

CONCRETE FINISHES: **Pentra-Sil® (NL)** COMPONENT 5 c. Step 3. While surface is wet with water, agitate with a broom to loosen any excess material that remains. Add more water if necessary. Squeegee the wastewater from the surface and dispose of in accordance with local regulations. Then repeat cleaning procedure a second pass to insure all residue has been completely removed, i.e. salt deposits, saw-cut powder, dust, excess **Pentra-Sil® (NL)** or any other surface contaminates.

#### TILT-UP CONSTRUCTION APPLICATIONS

**Pentra-Sil® (NL)** may be applied immediately after finishing operation and then a bondbreaker/curing material shall be applied over the top of **Pentra-Sil® (NL)** curing material or bond breaker manufacturer's instructions. When a curing compound must be applied to freshly placed concrete, use a water dissipating non-resin-based curing compound. Prior to applying the bond breaker, use the above procedure, then apply bond breaker as the curing agent on top of the **Pentra-Sil® (NL)** treatment.

#### EXISTING (OLD) CONCRETE

**Pentra-Sil® (NL)** may be applied to existing, cured concrete of any age. All surfaces must be clean and sound. Mechanically remove any surface laitance and patch or fix cracks and damaged areas. Remove all membrane forming curing compounds, sealers, oil, grease, dirt, dust and other containments. We recommend thoroughly cleaning surface with black scrubbing pad (light abrasion) and a neutral pH detergent. We recommend NOT etching the surface with an acidic solution because it requires thorough rinsing using a neutral pH cleaner to effectively neutralize the surface (if not properly neutralized the pH may cause whitening.) by brushing and a thorough water rinsing. For best results clean the surface by sanding the floor with a 60-100 grit sanding screen or diamond abrasive pad. Remove, dust and residue with riding or walk-behind "scrubber" using water or broom then water rinse and squeegee surface dry.

Use a low pressure or HVLP sprayer to apply **Pentra-Sil® (NL)** so as to form an even, consistent, monolithic glistening sheen and to ensure complete saturation of the surface. Use a microfiber applicator to spread **Pentra-Sil (NL)** evenly to ensure no puddling. If **Pentra-Sil® (NL)** is not drying, remove excess **Pentra-Sil® (NL)** with an auto-scrubber using water and brushes. Apply enough **Pentra-Sil® (NL)** to keep the surface wet for 20 minutes. Let the surface dry.

Make certain the most current versions of **Pentra-Sil® (NL)** Product Data sheet and MSDS are being used; Please read this information prior to use; call Customer Service (1-866-375-2280) to verify the most current versions or visit our website: [www.convergentconcrete.com/product/productpentrasil.html](http://www.convergentconcrete.com/product/productpentrasil.html)

Proper application is the responsibility of the user. Field visits by Convergent Concrete personnel are for the purpose of making technical recommendations only and not for supervising or providing quality control on the jobsite.

## FINAL RESULTS

Floor is ready for traffic and use when dry. Typical drying time is 1-2 hours. Treated surfaces will exhibit a slight satin sheen and reduced water absorption. Maximum strength and resistance will develop over 7 days. The surface will increase its hardness and durability and its sheen over time - taking on a polished look with general maintenance.

## OPTIONAL TOP COAT

For increased immediate shine, water repellency, chemical and stain resistance apply a light top-coat of **Pentra-Guard™ (HP)**.

## CLEAN UP

Use water and soap to clean tools and equipment.

## MAINTENANCE

Routine sweeping, mopping, washing and mechanical scrubbing of floors with mild conventional cleaners and detergents or water is recommended

**DO NOT USE acidic cleaners to maintain the floor.** Although **Pentra-Sil® (NL)** is chemically resistant and helps reduce staining, its application in specific chemical environments and some acidic concentrates, may etch the surface causing a residual stain. If unsure, check with a Convergent Concrete technical representative. Regular maintenance cleaning will improve surface shine. Use a non citric based degreaser and regular mopping or scrubbing of the floor. This will prolong the life of the floor surface and over time will increase the sheen ("polished look".) Wipe up any chemical spills as soon as possible. Prior to painting, stripping, or applying resilient tile wait 6-12 hours after application and conduct an adhesion test. Use a stiff broom, "power sweeper" to remove dirt and dust off the surface. Please consult the "manufacturer" to inquirer about surface preparation and recommendations. Always test adhesion and performance for suitability and desired results before overall application.

## AVAILABILITY

Treatments must be applied by an "Authorized Applicator" or "Licensed Field Service Specialist." **Pentra-Sil® (NL)** concrete treatments are available from Factory Direct Concrete Floor Care Centers or through direct "Authorized Applicators" from our plant and warehouse in Orem, Utah. For contact information for your nearest **Pentra-Sil® (NL)** representative, call our customer service department listed on the back page.

## COST

**Pentra-Sil® (NL)** treatments are competitively priced. Costs will vary from region to region. A **Pentra-Sil® (NL)** representative can provide price information or assist in contacting the nearest **Pentra-Sil® (NL)** stocking Concrete Floor Care Center.

## TECHNICAL SERVICES

A staff of factory trained service personnel offers design assistance and technical support. For technical assistance, contact our Technical Service Department: Technical Service Customer Care Toll Free 866-375-2280 or 801 375 2280. Email: [technicalservice@convergentconcrete.com](mailto:technicalservice@convergentconcrete.com) or go to: [www.convergentconcrete.com](http://www.convergentconcrete.com).

## FILING SYSTEMS

Architects' First Choice®  
MANU-SPEC®  
Sweet's®  
Arcat®

### TECHNICAL SERVICE

#### CUSTOMER CARE:

Toll Free 866-375-2280 or  
801 375 2280

#### EMAIL:

[technicalservice@convergentconcrete.com](mailto:technicalservice@convergentconcrete.com)

#### WEB:

[www.convergentconcrete.com](http://www.convergentconcrete.com)

#### For chemical/medical emergencies only,

call Infotrac (800) 535-5053  
Outside USA (352) 323-3500

## HEALTH AND SAFETY PRECAUTIONS

**Pentra-Sil® (NL)** is an aqueous Lithium silicate solution that uses proprietary compounds. The treatment is alkaline and may cause eye and skin irritation.

**KEEP OUT OF THE REACH OF CHILDREN.** Do not take internally. Avoid prolonged contact with skin. Avoid ingestion of material. If swallowed, do not induce vomiting – call physician. Avoid contact with eyes. Protective clothing is recommended. Protective goggles are recommended in case of splashing. If splashed in eyes, wash immediately with clean water and call physician. Contact areas should be thoroughly washed with soap and water. Additional precautions, safety information and first aid treatments are contained in the Material Safety Data Sheet. **Pentra-Sil® (NL)** will etch glass and painted surfaces. Immediately wash off with water all overspray from glass and painted surfaces. Caution: Surfaces wet with **Pentra-Sil® (NL)** may result in a slippery surface

## FOR INDUSTRIAL USE ONLY

Not for sale to or resale to general public. For professional use only and must be applied by an authorized applicator or licensed field service specialist.

## WARRANTY

LIMITED WARRANTY NOTICE Every reasonable effort is made to apply Convergent Concrete exacting standards both in the manufacture of our products and in the information that we issue concerning these products and their use. We warrant our products to be of good quality and will replace or, at our election, refund the purchase price of any products proved defective. Satisfactory results depend not only upon quality products, but also upon many factors beyond our control. Therefore, except for such replacement or refund, Convergent Concrete MAKES NO WARRANTY OR GUARANTEE, EXPRESS OR IMPLIED, INCLUDING WARRANTIES OF FITNESS FOR A PARTICULAR PURPOSE OR MERCHANTABILITY, RESPECTING ITS PRODUCTS, and Convergent Concrete shall have no other liability with respect thereto. Any claim regarding product defect must be received in writing within one (1) year from the date of shipment. No claim will be considered without such written notice or after the specified time interval. User shall determine the suitability of the products for the intended use and assume all risks and liability in connection therewith. Any authorized change in the printed recommendations concerning the use of our products must bear the signature of the Convergent Concrete Research Director. This information and all further technical advice are based on Convergent's present knowledge and experience. However, Convergent assumes no liability for providing such information and advice including the extent to which such information and advice may relate to existing third party intellectual property rights, especially patent rights. In particular, Convergent disclaims all WARRANTIES, WHETHER EXPRESS OR IMPLIED, INCLUDING THE IMPLIED WARRANTIES OF FITNESS FOR A PARTICULAR PURPOSE OR MERCHANTABILITY. CONVERGENT CONCRETE SHALL NOT BE RESPONSIBLE FOR CONSEQUENTIAL, INDIRECT OR INCIDENTAL DAMAGES (INCLUDING LOSS OF PROFITS) OF ANY KIND. Convergent Concrete reserves the right to make any changes according to technological progress or further developments. It is the customer's (Authorized Applicator) responsibility and obligation to carefully inspect and test any incoming goods. Performance of the product(s) described herein should be verified by testing and carried out only by qualified experts. It is the sole responsibility of the customer to carry out and arrange for any such testing. Reference to trade names used by other companies is neither a recommendation, nor an endorsement of any product and does not imply that similar products could not be used.

## Other Pentra™ Treatments

### **Pentra-Sil® (244+)**

Salt Protection and Dust Proofer -Hardener, Sealer, Densifier

### **Pentra-Guard™ (HP)**

High Performance Surface Hardener and Protective Clear Coat.

### **Pentra-Sil® (C&N)**

Concrete Cleaner and Neutralizer

### **Pentra-Sil® (AC)**

Alkalinity Control Formula and Primer

### **Pentra-Guard™ (EXT)**

Exterior Surface Hardening and Protective Clear Coat.

### **Pentra™-Protective Coating**

Industrial Topcoat Finish and Surface Hardener.

### **Pentra™ (MMC) Penetrating Sealer**

Exterior Mold and Mildew Control

### **TRANSIL™**

Traffic Marking and Safety Paint

For additional information on Pentra-Sil®(NL) Concrete Chemical Sealer, Hardener, Densifier or any of our other specialty Pentra™ treatments contact your local Specialty Chemical **"Concrete Floor Care Center"** or local dealer representative for an **"Authorized Applicator."**

## Unique Strengths, Unmatched Performance.™

---

### Convergent Concrete Specialty Chemical Concrete Treatments

115 North, 1380 West  
Orem, Utah 84057  
United States of America  
Office: 801-375-2280  
Fax: 801-375-2971  
[www.convergentconcrete.com](http://www.convergentconcrete.com)

**FORM NO. PENTRASIL-03360.111006-01/07**

©2010 Convergent Concrete Printed in U.S.A.

Printed on recycled paper including 10% post consumer fiber.



This information contained herein, is to the best of our knowledge and belief, accurate and is to be used as a guide to product selection. However, since the conditions of handling, installation and use are beyond our control, we make no guarantee of results. When in doubt, please test first.